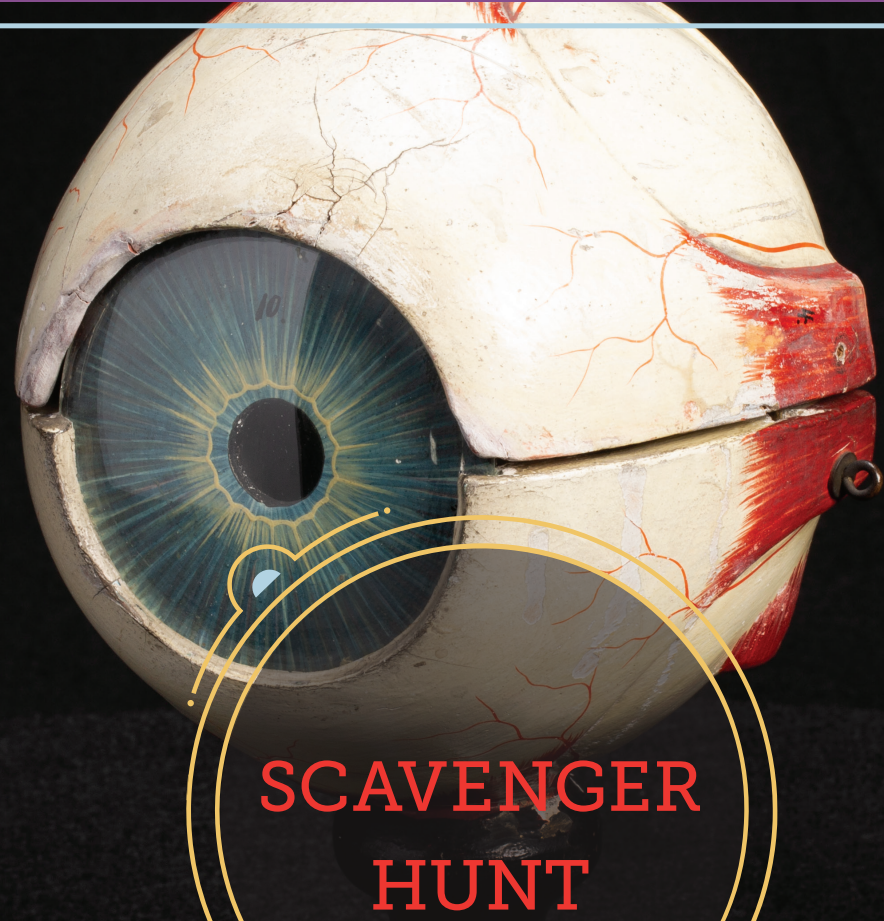


THE MÜTTER MUSEUM

of The College of Physicians of Philadelphia



SCAVENGER
HUNT

- 1 **Albert Einstein's Brain:** Brain sections, 0.02 millimeters thick and stained with cresyl violet, are preserved in glass slides. (Mezzanine Level)
- 2 **Vermillion Heart:** A heart injected with red dye to show blood vessel patterns. (Lower Level)
- 3 **Hyrtl Skull:** The skull of Constantin Jacic is part of our famous Hyrtl Skull Collection, which was used to disprove Phrenology, a racist 19th Century pseudo-science based on the idea that you could tell someone's character by looking at the shape of their skull. (Mezzanine Level)
- 4 **Left shoulder of Harry Eastlack:** Harry's skeleton shows extra bone growth from a rare disease known as Fibrodysplasia ossificans progressiva, or FOP. (Lower Level)
- 5 **Auzoux Eye:** Paper mache anatomical model of a human eye made by French physician Louis Thomas Jérôme Auzoux. (Worden Gallery)

ANSWER KEY

6 **Cornu Cutaneum:** A human horn, caused by unusual skin tumors. (Mezzanine)

7 **Tsantsa:** These are real shrunken heads, made by tribes in the Amazon. When used for spiritual ceremonial purposes, they are called Tsanta. Both are real human heads, but one is an authentic Tsanta and one is not—can you tell which is which? (Worden Gallery)

8 **Coal Lung:** This lung from a coal miner is black instead of the light pink color of a healthy lung. In addition to its discoloration, it also shows scarring and damage from breathing in coal dust. (Worden Gallery)

9 **Smallpox Arm:** This wax model of an arm is covered in bumps, called pustules, from a smallpox infection. Models like these were made by artists to look as realistic as possible and used to teach medical students. (Mezzanine)

10 **Chang & Eng:** Plaster death cast of the famous conjoined twins, Chang and Eng Bunker. (Lower Level)

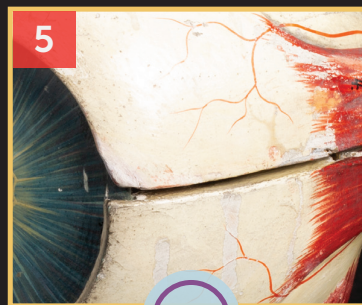
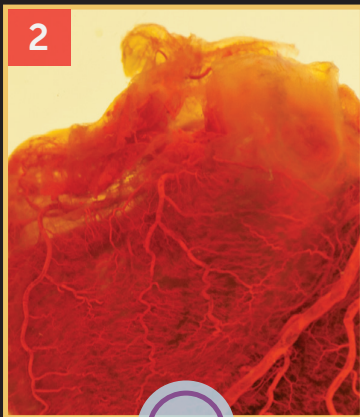
This activity has been made possible by a generous grant from the Connelly Foundation.

muttermuseum.org
19 S 22nd Street, Philadelphia PA 19103



Can you find these objects in the Museum?

Let's Begin! When you find each artifact, check off the blue circle at the bottom of each clue. Keep exploring until you find them all!



Want to see how you're doing? Check the answer key on the back page. Did you find it?

